



2015-16

ANNUAL REPORT



Serving Children, Strengthening Families, Building Community since 1906

BOARD OF DIRECTORS

Daniel Einhorn, Capital Midwest
President



Maria Gonzalez Knavel, Foley & Lardner LLP
Tracy Luber, Milwaukee Economic Development Corp.
Vice Presidents

Ronald Miller, Cleary Gull
Treasurer

Christine McLaughlin, Godfrey & Kahn
Secretary

Andrew Komisar, CliftonLarsonAllen LLP
Board President Elect

Michael Aldana, Quarles & Brady
JoAnne Anton, Herb Kohl Enterprises
Aisha Barkow, Milwaukee Area Technical College
Robert Barnard, Black Maple Capital Management
Sandra Botcher, Northwestern Mutual
Santino Cicero, Community Volunteer
Christopher Goller, Wisconsin, PNC Bank
Idy Goodman, Community Volunteer
William Heilbronner, Sattell Johnson Appel & Co. SC
Jacqueline Herd-Barber, Community Volunteer
Michael Hupy, Hupy and Abraham, S.C.
Tyra Ivy, We Energies
Bonnie Bockl Joseph, Bockl Enterprises
Marie Kasten, Community Volunteer
Jennifer Kent, Quad/Graphics, Inc.
Edward Krishok, Community Volunteer
Molly Lopes, Johnson Controls
Cheri McCourt, Northwestern Mutual
Nancy Miller, Community Volunteer
Heather Paradis, Children's Hospital of Wisconsin
Bryan Sadoff, Sadoff Investment Management
Jeffrey Schaefer, Associated Bank
Sari Selig Kramer, Selig Leasing Company
Meghan Slocum, BMO Harris Bank
Richard Strait, Northwestern Mutual Capital, LLC
Kimberlie Weekley, Bank Mutual
Lisa Wesley, US Attorney's Office
Mary Gute Witte, Community Volunteer

Thomas P. Schneider
Executive Director

Sally Kraus
Historian

DEAR COA FRIENDS,

In 1906 - 110 years ago - a dedicated group of women reached out to Milwaukee's new immigrants and created Wisconsin's first "Settlement House." Their legacy became COA Youth & Family Centers, and much more. The model they created - a holistic model of giving children and families the tools to become self-sufficient - has stood the test of time and continues to lift thousands of low-income children and families to a place of hope, and learning, and achievement.

It has been an exciting year for COA as we continue to grow: opening another early child education center, another youth center, and another park. And while we continue to grow, we never forget that lasting change is at the core of COA's work. It guides our service to more than 10,000 children and families at 11 locations throughout Milwaukee and at our 206-acre camp in central Wisconsin. Our vision is focused on **early child development, youth development, and community development**; and our **family-centered approach** is evident in fundamental transformations we have achieved with the children and families we serve.

Eleven years ago we opened the COA Goldin Center in the heart of the most distressed area in the city of Milwaukee, and the impact has been dramatic. What began with youth programming expanded to engaging residents and building neighborhood assets, opening a pediatric and family clinic, a new family resource center, a new park, a new early education center, and an active neighborhood association. While there is much to be done, we are seeing change in more empowered residents, an increase in voting, and a significant decrease in crime.

Today's COA is still on the cutting edge of innovation and change. This report looks at some of the exciting milestones we have reached over the past year thanks to the support of donors, volunteers, and community stakeholders. We invite you to give us a call, take a tour, and see for yourself the impact of what we do and how we do it.

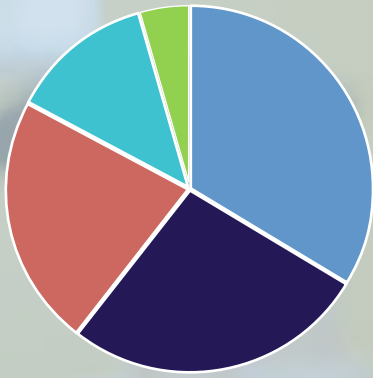
Most important: Thank you so much for investing in COA and the children and families we serve, and for helping the most vulnerable members of our community build new traditions of success and a greater quality of life. We simply could not do this without your support.

Sincerely,

Daniel Einhorn
Board President

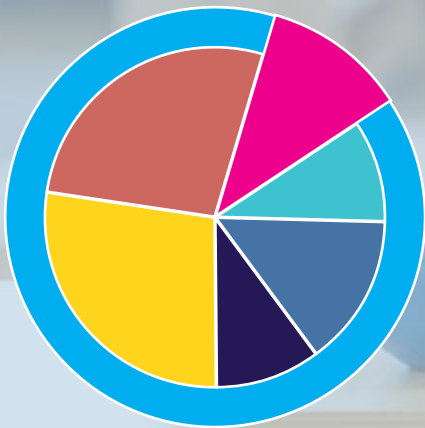
Tom Schneider
Executive Director





ANNUAL OPERATING REVENUE

Contributions and Grants	\$2,040,164	33.84%
Program Service Fees	\$1,611,127	26.72%
Government Grants	\$1,348,446	22.36%
United Way	\$767,229	12.72%
Special Events	\$262,413	4.35%
Total Annual Operating Revenue	\$6,029,379	100.00%



EXPENSES BY PROGRAM

Early Childhood Education	\$1,658,141	27.50%
Youth Development	\$1,656,075	27.47%
Family Support Services	\$670,767	11.13%
Camping	\$573,334	9.51%
Community Services	\$874,605	14.51%
Total Program Expenses	\$5,432,922	90.12%
Total Management & Fundraising	\$595,891	9.88%
Total Annual Expenses	\$6,028,813	100.00%

CHARITY NAVIGATOR 4-STAR RATING

For the 11th consecutive year, COA Youth & Family Centers has received a four-star rating from Charity Navigator - a national evaluator monitoring America's non-profit organizations.

COA was rated:

- One of only 46 charities in Wisconsin with a four-star rating
- The highest-rated Wisconsin youth & family services charity
- Only 1% of all charities nationally have 11 consecutive 4-star ratings



ACCOMPLISHMENTS

HIPPY:

Over **250** children and their parents benefited from HIPPY

100% of parents reported seeing literacy skill improvement in their child

EARLY EDUCATION CENTERS:

Over **100** children are already enrolled in the new Burke Early Education Center

91% of children at COA's EECs displayed developmental improvement in their literacy skills

FAMILY RESOURCE CENTERS:

There were **15,000** visits by parents and children to COA's Family Resource Centers last year

COA's Harry and Rose Samson FRC in Riverwest is **Wisconsin's largest** Family Resource Center

EARLY CHILD DEVELOPMENT

COA's quality Early Child Development programs provide the foundation for success in school and later life. Children are taught through fun, developmentally appropriate activities from proven, accredited curricula, and their parents strengthen the skills and knowledge they need to succeed in their roles as nurturers through educational workshops, facilitated discussions, and more.

EARLY EDUCATION CENTERS (EEC)

This year, COA more than doubled the number of children (from 108 to 239) in our quality early child education by building and opening the new Burke Early Education Center, and adding new space for an additional 17 children at our 5-Star nationally accredited Riverwest Center. Children in COA's early education centers develop the social, emotional, and cognitive skills they need to enter school ready to learn and succeed.

FAMILY RESOURCE CENTERS (FRC)

COA's Harry and Rose Samson FRC (Riverwest Center) and Ethel Nutis Gill Family FRC (Goldin Center) attract parents and their children (birth to age 5) to establish new friendships, develop positive parenting skills, participate in group discussions, and access the critical resources they need to thrive. Individualized job and resume assistance, guidance and practical referrals for medical and financial services, family camps and field trips, and more make the FRCs an important home for many Milwaukee families.

The Gill FRC coordinated programming in the new Moody Park this summer including family activities, free meals, arts programming, sports programming, community gardening, and much more.

HOME INSTRUCTION FOR PARENTS OF PRE-SCHOOL YOUNGSTERS (HIPPY)

The HIPPY program helps pre-school-aged children (ages 3-5) develop the cognitive, literacy, communication, social-emotional, and behavioral skills they need in order to be ready to learn and succeed later in life. HIPPY deepens parents' skills and knowledge to help them succeed in their role as their child's first, most important teacher. Marquette, UWM, and national evaluations document the success of HIPPY graduates when they start school.





NO MORE FIGHTING FOR FREDDIE

When two-year-old Freddie first came to COA's brand new Burke Early Education Center, he was behind in almost all critical developmental milestones. With significant speech delays and communication issues, he often lashed out with temper tantrums. But within just a few months, Freddie has transformed into one of the sweetest children at the Burke EEC.

His teachers helped him learn to do things on his own behalf, encouraging him to be vocal about his needs. If Freddie asked to have a page turned, teachers talked him through doing it himself. To nurture his verbal communication, teachers would give him open-ended questions that he had to answer aloud. Instead of asking if he wanted more milk (his favorite), they'd simply ask what he wanted to drink. Instead of asking if he wanted to play, they'd ask what game he wanted to play, and what friends he wanted to play with. Under their careful tutelage, Freddie's crying and tantrums quickly disappeared and he was offering multiple-word replies and actively trying to serve himself.

Freddie is thriving at COA's Burke EEC, and we can't wait to see his continued progress as he grows!



ACCOMPLISHMENTS

PRE-TEEN AND TEEN PROGRAMMING

94% improved on being on track to graduate/go to the next grade level

88% improved in believing they could make a difference in their community

This year COA added another location, with daily teen programming at the Holton Center

COMMUNITY LEARNING CENTERS

The Robotics team at COA's Riverside University High School CLC won the Midwest regional competition and competed nationally

CAMP HELEN BRACHMAN

257 (100%) of campers needed and received scholarships

94% had the opportunity to make new friends at camp

89% said that they were more responsible for their actions at the end of their camp stay

89% said that they would make things right if they made a mistake



YOUTH DEVELOPMENT

COA's continuum of youth & family programs strengthen young people by providing opportunities to gain the skills, knowledge, self-efficacy, and confidence that help them reach their full potential cognitively, physically, and socially, and become the leaders our city needs.

PRE-TEEN AND TEEN PROGRAMMING

COA's youth programming provides structured programming for youth age 6-18 where they connect with positive adult role models, have fun and make new friends, and participate in valuable extended learning opportunities. After-school and summer programs are delivered from the safety of COA's Riverwest, Goldin, and new Holton Center and their adjacent Kilbourn-Kadish and Moody Parks. Our Pre-teen and Teen Leadership Councils help guide the design of COA's academic, recreational, social, cultural, and community programs that engage over 1,100 youth each year.

COMMUNITY LEARNING CENTERS (CLC)

COA's CLCs are embedded in seven Milwaukee Public Schools and extend our proven, evidence-driven programming to youth living in some of Milwaukee's most at-risk neighborhoods. This partnership means hundreds more children can participate in AODA, pregnancy prevention, and conflict resolution courses; play team sports; and a wide variety of after-school activities ranging from robotics to chess to community service projects that promote well-rounded development.

CAMP HELEN BRACHMAN

Every summer hundreds of low-income children benefit from immersive 13- and 6-day sessions at COA's beautiful 206-acre Camp Helen Brachman in central Wisconsin. Surrounded by the Wisconsin north woods and Lake Pickerel, many youth have their first opportunity to learn to fish and swim, to see the starry sky, to make new friends and develop their skills and self-confidence. Camp also provides winter camp and free Family Camps and Youth Leadership Institutes throughout the year. This year COA celebrated 110 years of sending kids to camp.



COA OPENS THE NEW COA HOLTON CENTER

COA's teen program at the new Holton Center meets a clear need. Youth in the north end of Riverwest and the adjoining Harambee neighborhood need a safe place to learn, to connect, and to develop. This area is one of the poorest in Milwaukee and has a high concentration of children.

COA's goal in opening the new Holton Center is to see tangible change in the neighborhood. And what does this change look like? Change looks like...

- A safe place for youth to get together to engage and play,
- A great place for youth to study and learn,
- Having parents who are engaged every day with their children, and
- A neighborhood where residents are involved, who look out, and care for each other.

Because of the success of COA's Riverwest and Goldin Centers, we know this change is possible. Already we are seeing increasing numbers of youth from the neighborhood becoming engaged and we look forward to continuing this success and growth in the year ahead.



TOMORROW IS BRIGHT FOR TESSA



Tessa is 13 years old and grew up in the Amani neighborhood. When she first joined the Teen program at COA's Goldin Center she often got into fights with other youth, didn't cooperate well with staff and other youth, and had no goals for her future.

She found peace in COA's structured programming and her community of new friends (including staff), reveling in positive activities including dance, restorative justice workshops, spoken word poetry, community service, and participating in the development and production of the Precious Lives Live Show at the Pabst Theater. Tessa says COA's project-based programming taught her "If you're going to do something, do it all. You can do whatever you want if you put your mind to it and make a commitment." Since joining COA, Tessa has blossomed into a creative force and role model for her peers.

Tessa has committed herself to being successful, not just for her own good, but also to take care of her mother as she gets older. Tessa's new goals include attending college and continuing to work to make her community a better place.

ACCOMPLISHMENTS

COA's Amani neighborhood development initiative was selected by UCLA and the Doris Duke Charitable Foundation as **1 of 8 national models for community development.**

COA won three 2016 MANDI Awards (Milwaukee Awards for Neighborhood Development Innovation):

- **Cornerstone Award** for COA's role in revitalizing the Amani neighborhood and for COA's "commitment and effectiveness over time."
- **Public Space Award** to Milwaukee County Parks Department and community partners including COA and the Dominican Center for Women for the development of Moody Park - "a symbol of revitalization for the Amani neighborhood."
- **People's Choice Award** awarded to COA by public vote.

COA is the fiscal agent for the **Precious Lives project**, providing weekly stories about the impact of gun violence in Milwaukee. Teens from the new COA Holton Center were actively involved in developing and producing the Precious Lives: Live Show, held this June at the Pabst Theater.

COMMUNITY DEVELOPMENT

2015-16 was a banner year for COA's award-winning community development initiatives. By improving the neighborhood - the environment that wraps around the children and families we serve - we see an immediate and direct impact on the children, youth and families there.

RIVERWEST/HARAMBEE

In the Riverwest and Harambee neighborhoods, COA's development of Kilbourn and Kadish parks (in partnership with the City) has helped transform the entire area with new housing, jobs, and a safer environment. And while COA provides regular youth programming in the park, more than 8,000 residents attended the 10th season of COA's Skyline Music series. In January COA began teen programming at the Holton Youth Center (in partnership with Holton Youth + Family Center) to increase the reach of our programs to youth in Harambee and Riverwest. Since programming began, youth participation has steadily grown and the youth attending have been actively involved in community service projects, including clean-ups as well as important dialogues on restorative neighborhood action.



[Emmy Yates - Milwaukee NNS]



A COA youth performs at the Precious Lives: Live Show

[Michael Sears - JS Online]

AMANI

COA is committed to transformational change in the Amani neighborhood where we serve children, families, and neighborhood residents at COA's Goldin Center. COA accomplishes this through two strategies: engaging Amani residents and building Amani neighborhood assets. In addition to daily youth programming, the new Burke Early Education Center provides quality early education where none previously existed. The Ethel Nutis Gill Family Resource Center provides daily family programs and services. In partnership with Children's Hospital, a pediatric and family clinic provides access to healthcare where there had been none.

At the new Moody Park, COA provides daily park programming (splash pad, arts and crafts, soccer, basketball, rugby, chess, gardening, and community meals) for children and families. Through the Amani United Neighborhood Association and Friends of Moody Park, Amani residents are engaged and actively working to make Amani a safer family neighborhood.

All of this has produced hopeful signs. Residents regularly attend neighborhood meetings, plan neighborhood activities, and voting in Amani has significantly increased. COA's Amani community nights regularly attract over 500 participants, and crime has decreased 22% in Amani over the past three years.

While we recognize there is more work to do, COA is proud of what has been accomplished in the Amani neighborhood since COA opened the Goldin Center in 2005.



PARENTS OF THE YEAR

Every year COA gathers with community members to celebrate the power of positive parenting by recognizing outstanding parents here in Milwaukee. COA was proud to honor Peter and Natalia Feigin and Max Samson and Nancy Pinter, as our 2016 Mort and Barb Blustein Parents of the Year! COA's Parents of the Year Luncheon took place August 9th at the Harley-Davidson Museum® to honor the impact of these amazing parents with keynote addresses from the honorees and their children and a very special performance by COA's Early Education Choir. Also honored at the event was COA parent participant Brenda Roshell with the Ethel Nutis Gill Award. This year the event successfully raised over \$130,000 to support COA's family-centered programs. A special thank you to the event co-chairs Austin and Heather Ramirez and Rob Goodman.



HOLLYWOOD GALA

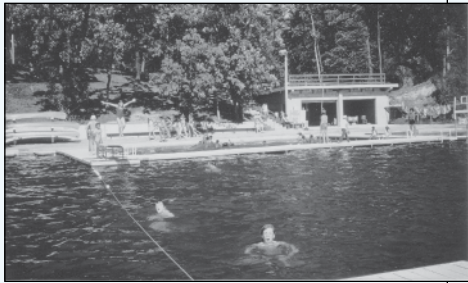
COA rolls out the red carpet on Hollywood's biggest night for its annual Hollywood Gala. This event, presented by the Marcus Corporation and the National Association of Theatre Owners of Wisconsin & Upper Michigan, was held on February 28th 2016 at the Hilton Milwaukee City Center and featured a formal dinner, silent auction, and a live screening of the 88th Academy Awards while raising over \$160,000 to support COA's family-centered programs. A special thank you to event co-chairs Tracy Luber, Gil Southwell, Mary Gute Witte and Ned Witte.



CELEBRATING 110 YEARS

1906

The Children's Outing Association sent eight children to camp in its first year of existence, starting off a 110-year tradition.



1929

Camp Sidney Cohen opens and later becomes the first coeducational and the first interracial camp in Wisconsin.



1969

Camp Flambeau in Vilas County, provided programs for central-city teens that included camp activities, job training and horseback-riding.



1970

With the growth of in-city and camp programs, COA opened its North Ave building and began providing early child education and youth programming.



1991

COA opens 206-acre Camp Helen Brachman and COA's Riverwest Center providing youth, family and early child education.



2004-2005

COA opens Kadish Park and the new COA Goldin Center in Milwaukee's Amani neighborhood.



2015

COA opens the new Burke Early Education Center, the new Moody Park and the new COA Holton Center.

Past COA Presidents

- 1906-1911 Mrs. Eugene Friend
- 1912-1913 Mrs. Frank Thannhauser
- 1913-1915 Mrs. S.M. Cantrovitz
- 1915-1920 Mrs. S Wollheim
- 1920-1922 Mrs. Leo Reitman
- 1922-1924 Mrs. Max Teweles
- 1924-1928 Mrs. Julian Marks
- 1928-1929 Mrs. Sidney Cohen
- 1929-1933 Mrs. Sigmund Brachman
- 1933-1943 Mrs. Charles Friend
- 1943-1944 Mrs. Ernest Rice, Sr.
- 1944-1946 Mrs. A. B. Schwartz
- 1946-1948 Mrs. Eugene Elsas
- 1948-1950 Mrs. Alex P. Greenthal
- 1950-1952 Mrs. Walter Polacheck
- 1952-1954 Mrs. Edward Prince
- 1954-1955 Mrs. Stanley Polacheck
- 1956-1957 Mrs. Robert Krauskopf
- 1958-1959 Mrs. Albert Heller
- 1960-1961 Mrs. Sydney Krasno
- 1962-1963 Mrs. Fred Goodman
- 1964-1965 Mrs. Ernest Rice, Jr.
- 1966-1967 Mrs. Charles Ashley
- 1968-1969 Mrs. Donald Polacheck
- 1970-1971 Mrs. Abraham Melamed
- 1972-1973 Mrs. Edward Levi
- 1974-1975 Mr. Donald Polacheck
- 1976-1977 Mrs. Irvin M. Becker
- 1978-1979 Mrs. Arthur Meissner
- 1980-1981 Mrs. John Givens
- 1982-1983 Mr. Art Saltzstein
- 1984-1985 Mr. Mort Blutstein
- 1986-1987 Mrs. Pat Rieselbach
- 1988-1989 Mr. Ely Leichtling
- 1990-1991 Mr. Buckey McKinley
- 1992-1993 Ms. Jane Gellman
- 1994-1996 Mrs. Barbie Blutstein
- 1996-1998 Mr. Max Samson
- 1998-2000 Mr. Allen Silverstein
- 2000-2002 Mr. Jack Rosenberg
- 2002-2004 Mrs. Lina Cicero
- 2004-2006 Mr. John Florsheim
- 2006-2008 Dr. Lucille Rosenberg
- 2008-2012 Mrs. Bonnie Bockl Joseph
- 2012-2014 Mr. Mark Kultgen
- 2014-2015 Ms. Lindy Yeager

Donors

We have one hundred ten years of history making positive changes to Milwaukee's most distressed neighborhoods. The generous support of donors like you enables us to change the lives of children and families throughout the city.



COA's Endowment Funds supporting COA forever...

Alice Bertschy Kadish Park Fund
Alice Uhrig Boese Memorial Fund
Barbie & Morty Blutstein and Grandchildren Campership Fund
Bud and Sue Selig Fund
Carolyn F. Miller Campership Fund
Charles A. Hayes Fund
David and Julia Uihlein Fund
Ely Leichtling and Sally Merrill Fund
Ernest F. and May Rice Memorial Fund
Ethel Gill Campership Fund
Gene and Ruth Posner Fund
Harry and Rose Samson Endowment Fund
James I. and David L. Saltzstein Memorial Fund
Janet Hirshberg Krauskopf Campership Fund
Jerry and Harriet Glasspiegel Camp Scholarship Fund
Larry and Bobbi Polacheck Family Campership Fund
Mel and Leila Goldin Fund
Pearl Becker Fund
Sally Kraus Child Care Fund
Scott and Peggy Sampson Family Fund
Susie Stein Family and Children Campership Fund
TPS Scholarship Fund

Visionaries (\$25,000+)

Anonymous
Bader Philanthropies
Isabel and Alfred Bader
Brady Corporation
The Burke Foundation
City of Milwaukee, Department of City Development
Community Advocates, Inc.
Daniel M. Soref Charitable Trust
Department of Public Instruction
Department of Transportation
Doris Duke Charitable Foundation
Leila Goldin
Greater Milwaukee Foundation
Elm II Fund
Richard & Ethel Herzfeld Foundation
Jewish Community Foundation
Melvin & Leila Goldin Donor Advised Fund
Marcus Corporation Foundation
Agatha Melamed
Milwaukee Brighter Futures
Milwaukee Public Schools
Milwaukee Repertory Theater
Northwestern Mutual Foundation
Opus Foundation
Patrick and Anna M. Cudahy Fund
Sheldon & Marianne Lubar Charitable Fund
Stay Strong Milwaukee
Tirdof Donor Advised Fund
United Way of Greater Milwaukee and Waukesha County
Weyco Group, Inc.

Patrons (\$10,000-\$24,999)

A.O. Smith Foundation, Inc.
Melanie and Steve Booth
Camp for Kids
David and Julia Uihlein Charitable Foundation
Sallie and Don Davis

Fleck Foundation
 Forest County Potawatomi Foundation
 Jane Bradley Pettit Foundation
 Jewish Community Foundation
 Jack & Jucy Rosenberg Donor Advised Fund
 PAR Donor Advised Fund
 Nancy and Art Laskin
 Abigail Melamed
 Janet and John Melamed
 Milwaukee Brewers Baseball Club
 Alex Molinaroli
 Nicholas Family Foundation
 Michael and Donna Nicholson
 Peck Foundation
 PNC Bank Foundation
 Patricia and Allen Rieselbach
 Shelagh and Steve Roell
 Lucy Rosenberg

Stakeholders (\$5,000-\$9,999)

Anon Charitable Trust
 Heidi Marcelle and Robert Barnard
 Cal Ripken Sr. Foundation Inc.
 Center For Youth Engagement Inc.
 Godfrey & Kahn, S.C.
 Elmer & Nanette Winter Family Foundation
 Gene & Ruth Posner Foundation, Inc.
 Peter Glicklich
 Richard Goldin
 Idy Goodman
 Henkel of America
 Hupy and Abraham, S.C.
 Irgens
 Jewish Community Foundation
 Bill & Idy Goodman Family Donor Advised Fund
 Johnson Controls, Inc.
 ManpowerGroup
 Milwaukee Brewers Community Foundation, Inc.
 NATO of Wisconsin and Upper Michigan
 Payne and Dolan, Inc.
 Philip Rubenstein Foundation
 Rexnord Inc.
 Nancy Pinter and Max Samson
 Susan and Cary Silverstein
 Debra and Brian Stark
 Bert L. and Patricia S. Steigleder Charitable Trust
 Sue and Rick Strait
 Susan Silverstein Trust
 We Energies
 Wells Fargo Bank Foundation
 Ronald White

Trendsetters (\$1,500-\$4,999)

Jason Abraham
 Michael Aldana
 Allen Silverstein Atty. & Counselor at Law
 Associated Bank
 August G. Mueller Trust
 Baird Foundation, Inc.
 Jackie Herd-Barber and Michael Barber
 Donna and Donald Baumgartner
 Beer Capitol Distributing, Inc.
 Berghammer Construction Corp
 BMO Harris Bank
 Brady Street Business Improvement District #11
 Briggs & Stratton Corporation

Foundation, Inc.
 Lisa and Tony Cadotte
 Camp Nebagamom Scholarship Fund
 Capital Midwest Advisors II, LLC
 Tom Carney
 Children's Hospital of Wisconsin
 Clare M. Peters Charitable Trust
 Cleary Gull Inc.
 CliftonLarsonAllen
 Cousins Subs Make It Better Foundation
 Croen Foundation, Inc.
 Direct Supply Foundation, Inc.
 Eileen and Howard Dubner
 Nancy and Steven Einhorn
 Evan and Marion Helfaer Foundation
 Express Promotions
 Laurie Fallucca
 Barbara Fernholz
 Lindy Yeager and John Florsheim
 Linda and Eli Frank
 Theodore Friedlander
 Katherine Gehl
 Danni and Sheldon Gendelman
 Julie Ragland and Russell Grabszyk
 Greater Milwaukee Foundation
 Joan & Irving Saltzstein Fund
 H.L. Epstein Family Foundation
 Ann and John Hammes
 Paula and John Hare
 Harold Hiken Campership Fund
 Jewish Community Foundation
 Anne & Steven Kravit Donor Advised Fund
 Barbara & Edward Levi Donor Advised Fund
 Dr. Larry & Roberta Polacheck Donor Advised Fund
 Eileen & Howard Dubner Donor Advised Fund
 Komisar, Brady, & Co., LLP Donor Advised Fund
 Ronald D Miller & Susan Angel Miller Donor Advised Fund
 Sarah and Jeffrey Joerres
 Michael Johnson
 Jenni and Michael Jones
 Jennifer Kent and Ken Dortzbach
 Maria Gonzalez-Knavel and William Knavel
 Kohl's Department Stores, Inc.
 Shannon Corallo and Andy Komisar
 Anne and Steven Kravit
 Julie and Chad Kreblin
 Edward Krishok
 Karin and Mark Kultgen
 Law Office of Shannon Corallo, LLC
 Barbara and Edward Levi
 Lubar & Co.
 Tracy Luber
 Linda and John Mellows

Kathryn Miller
 Susan and Ron Miller
 Milwaukee Admirals Power Play Foundation
 Milwaukee Bucks
 Molina Healthcare
 Chandler Nijon
 Rhonda and Gregory Oberland
 Operation Green LLC.
 Park Bank
 Roberta and Larry Polacheck
 Debra and James Poliak
 Chuck Pruitt
 Quarles & Brady LLP
 Ralph or Cherie Gorenstein Charitable Foundation, Inc.
 Reilly, Penner & Benton LLP
 Rite Hite Corporation
 Riverwest Businessmen's Corp.
 RSM US LLP
 Sandy Botcher
 Satisfloh
 Dale Metz Schneider and Thomas Schneider
 Scribner, Cohen & Company, S.C.
 Sue and Bud Selig
 Lisa Quezada and Joshua Smith
 Gil Southwell
 Leslie and Jim Stollberg
 Lisa and Paul Sweeney
 The Scan Group
 The Service Club Of Milwaukee, Inc.
 The Tracks Tavern & Grill
 U.S Bancorp Investments
 United Way of Metro Chicago
 Von Briesen & Roper, s.c.
 Wangard Partners, Inc.
 William Stark Jones Foundation
 Mary and Edward Witte
 Lynn and Carl Zaar

Pioneers (\$1,000-\$1,499)

Affiliated Health Care Settlement Fund
 Stephanie and Chad Altschaf
 AYCO Charitable Foundation
 Cheri and Steven Barth
 Margery Becker
 Susan and Carl Becker
 Natalie Beckwith
 Christena and D. Woodrow Benson
 Camp Thunderbird Charitable Foundation
 CG Schmidt, Inc.
 Michael Cleary
 Patrick Cotter
 Jackie and Luciano DeLeon
 Penny and Jim Deshur
 Matt and Lindsay Domski

Dudley & Constance Godfrey Foundation, Inc.
 Sarah and Bob Duncan
 Edith Arnstein Charitable Trust
 Patrick and Rachel English
 Jennifer and Thomas Florsheim
 Foley & Lardner LLP
 Christopher Goller
 Greater Milwaukee Foundation
 Children's Experiential Opportunities Fund
 Patrick W. and Lois S. Cotter Fund
 Charmaine Gunderson
 Elaine and Donald Harvey
 Ruth and Daniel Hau
 Suzanne and Michael Hupy
 Jack and Jill of America Foundation, Inc.
 Jewish Community Foundation
 Albert & Anne Deshur Donor Advised Fund
 Lois Malawsky Donor Advised Fund
 Margery H & Irving M Becker Donor Advised Fund
 Linda and Michael Katz
 Connie and John Kordsmeier
 Margie and Tom Krauskopf
 Lois Malawsky and Jay Larkey
 Brenda and Matthew Levatic
 Margie and Jonathan Margolies
 Cheri and Kevin McCourt
 Christine and Randy McLaughlin
 Cheryl and Blake Moret
 Mortgage Guaranty Insurance Corp.
 Timothy Newgard
 Alicia and Bryan Sadoff
 Susan and Steve Schnoll
 McDavis Slade
 Mary and Steven Smith
 Cynthia and James Stoll
 Dan Vaccaro
 Kimberlie and Rod Weekley
 Barb and Richard Wiederhold
 Katherine Yost
 Kay and Richard Yuspeh
 John Zagarczyk

Leaders (\$500-\$999)

Ryan Alwood
 Samuel Amdur
 Sharon and Steve Antholt
 JoAnne and Nicholas Anton
 Christopher Baker
 Debra and David Barash
 Aisha and Brian Barkow
 Karen Bauer
 Barbara and Stephen Becker
 Diane Bezella
 Lisa and Eli Bliffert



Elizabeth and Steve Brenner
 Andrea Renee Brouer
 Lester Carter
 Lina and Sandy Cicero
 Kelly and David Cisar
 Catherine and Mario Costantini
 Julie and Sean Cummings
 Mary Ritchie and Thomas
 Cunningham
 Sharon and Jim Deguzman
 Jason and Amy Emmett
 Suzy Ettinger
 Joan and Michael Friedman
 Patrick Gallagher
 GE Foundation
 GE United Way Campaign
 Barry Glicklich
 Diana and Leonard Goldstein
 Jason Graham
 Greater Milwaukee Foundation
 Ernest F. Rice and Babette
 A. Rice Fund

Frank & Elsa Sterner Fund
 Veronica and Peter Gunn
 Cheryl and Charles Harvey
 Kathy and William Heilbronner
 Tyra Ivy
 Keith Jacoby
 Jewish Community Foundation
 Richard Kahn Donor Advised Fund
 Joan & Michael Friedman
 Donor Advised Fund
 Diane & Leonard Goldstein
 Family Donor Advised Fund
 Suzy B Ettinger Donor Advised Fund
 Patricia Keating Kahn and
 Charles Kahn

Susan Freeman and Richard Kahn
 Bob Klein
 Mary and Ted Kellner
 Carrie and Grant Killoran
 Margaret and Kevin Kinney
 James Krasno
 Mary and James LaVelle
 Anna and Howie Lederman
 Ann and David Leiker
 Molly and Stephen Lopes
 Julio Maldonado
 Laura and Joseph Mantoan
 Cynthia and Michael Martin
 Linda May
 Dana McCormick
 Ruth McEwen
 Liliane and Dorian McFarlane
 Wendy and Patrick Miller
 Cheryl and Mitchell Moser
 Mary and Robert Mulcahy
 Cathie and Randy Myszewski
 NAI MLG Commercial
 Judy and Randy Nelson
 New Berlin Dental Group
 Andrew O'Connell
 Jill and Peter Olive

Maike and James O'Rourke
 Jim Parks
 Ryan Pogodzinski
 Lynn and John Quilloco
 Raymond Retzlaff
 Julie and Mason Ross
 Christy Brooks and Allen Silverstein
 Meghan Slocum
 Joan Spector
 Mary and John Splude
 Mary Ellen and Scott Stanek
 Barbara Stein
 Elsa and Frank Sterner
 Brenda and Mark Szumski
 Maddy and Jeff Tarbox
 Stewart Wangard
 Cindy and David Werner
 Kim Wynn
 Virginia and David Zerwick
 Lisa and Craig Zetley

Heroes (\$250-\$499)

Micki Fox and Craig Albee
 Susan Anthony
 Kellie Lang and Mark Backe
 Harvey Barash
 Barnes & Noble Booksellers
 Holly and Kevin Baumgart
 Jerome Beamon
 John Bitter
 Terry and Anthony Boatman
 Cheryl and Mark Brickman
 Kathleen and Dennis Burchby
 Ryan and Theresa Chimenti
 Concours, Inc.
 Congregation Emanu-
 El B'ne Jeshurun

Dan Conley
 Mildred and Francis Davis
 Dennis Derby
 Jeanne and Scott Diffley
 Diversified Insurance Services, Inc.
 Ray Dupree
 Dynatect Manufacturing, Inc.
 Sasha Fernandez
 Kaitlin Fink
 Sara and Mark Fiorita
 Blanche Kushner and Pat Flood
 Linda and Eli Frank
 Richard Frohling
 Maira Gavioli
 Thomas Gehl
 Inez and Eugene Gilbert
 Herbert Giller
 Randy Goodman
 Greater Milwaukee Foundation
 Jorgensen Family Fund
 Mimi and Robert Habush
 Jenny and Tim Hansen
 Christopher Harris
 Jon and Nora Hauser

DeAnn and David Heard
 Diane and Richard Heilbronner
 Mary Herman
 Rose Marie Hoffmann
 Jewish Community Foundation
 Burton & Audrey Strnad
 Donor Advised Fund
 Abigail & David Nash Donor
 Advised Fund
 Bruce Johnson
 Shameka Johnson
 Judy and Gary Jorgensen
 Jorge Juarez
 Sherrie Kaiser
 Martin Moshe Katz
 Mary and James Kaufmann
 William Kerns
 Donna Koepke
 Sally and Carroll Kraus
 Marian and Jack Krauskopf
 William LaBahn
 Kim Lacy
 Catherine LaFleur
 Chris Larsen

Marlene Lauwasser
 Susan and Kent Lovern
 Catherine and Saede Maleki
 John Mann
 Susie and James Martin
 James Meier
 Nancy Morgan
 Jeff and Holly Morris
 Jessica Namaste
 Abigail and David Nash
 Heidi Netzel
 Kelly Nichols
 Heather and Jeff Paradis
 Jill and Tom Perlberg
 Jeanne Pien
 Cindy and Bruce Pindyck
 Don and Helen Polacheck
 Kris and Garrett Ponciroli
 Besty and William Reilly
 Stephanie and Greg Rothstein
 Sattell, Johnson, Appel
 & Company, SC

Leslie and David Scherzer
 Tom Schneider
 Randy Schultz
 Jean and Rusty Smith
 Naomi and Morton Soifer
 Nancy and Tim Stauder
 Dori and Jason Steigman
 Audrey Strnad
 Alicia Dupies
 Katie Taff
 Gerri and Arthur Townsell
 Beverly and Joe Trevino
 Rebecca Uihlein
 Jovita Walker
 Lisa and Greg Wesley
 Libby and James Wigdale, Sr.
 Diane and Edward Zore
 Ruth Zubrensky

Kathy and Lawrence Bennett
 Jamie and Zach Berger
 Marc Berkson
 Karen and Elliot Berman
 Danielle Bergner
 Jeanette and Bob Bilodeau
 Brynn and Gerald Bloch
 Sara Boettcher
 Ellie Boone
 John Borges
 Susan Breakwell
 Cheri and Tom Briscoe
 Darlene Brusewitz
 Carole Burns
 Fleneice Burnham
 Gail and David Burnside
 Camp Agawak, LTD
 Stacey and Mark Campisano
 Sharon and Richard Canter
 Susan and William Caplan
 Jim and Bobbi Caraway
 Scott and Melissa Conger
 Korbena-Marcus Collins
 Complete Health, Inc.
 Audrey and Craig Conover
 Sally Cooper
 Charles Cramer
 Helen Dahms
 Maria De Jesus Castillo
 Scott Deitz
 Robert and Alice Diaz
 Harry Easom
 East Bay Duplicate Club
 Kevin Ede
 Eva Eiseman
 Candice Feider
 Patty and David Feiss
 Michael Fendrich
 Dennis Flood
 Flavia Florentino
 Nancy and James Forbes
 Liz and Scott Forman
 Matthew Frank
 Frances Franklin
 Jade Freeman
 Fund Development Corp.
 Linda Gatzow
 Tara Geiter
 Lori Gendelman
 General Capital Management, Inc.
 Kimberly Gerlach
 Rebecca Glassner
 Anne-Marie Glenn
 Eliana Glicklich
 Peter Goldberg
 Debbie and Martin Goldin
 Ruth Goldmann
 Sharon and Robert Goldstein
 Eloisa Gomez
 Aurora Gonzalez
 Good Karma Brands
 Terry and Jay Goodman
 Goris Financial Group Inc. -
 Northwestern Mutual

Greater Milwaukee Foundation
 JayKay Foundation
 Janet Greenebaum
 Sherri Hampel
 David Hansen
 Patricia Hanz
 Roslyn and Morton Heafitz
 Matthew Healy
 Barbara Heilbronner
 Jody Heilbronner
 Joan Heller
 Jonathan Heller
 John Henshue
 Louise Herrod
 Samuel Herzberg
 Jonna and Tim Higgins
 Mary and Jonathan Hintz
 Sally and Al Hochstein
 Marty Honel
 Susan and William Hotz

Benefactors (\$100-\$249)

Roberta and Robert Abendroth
 Paul Albrecht
 Joy and Steve Appel
 Margarita Araujo
 Julie and Paul Armour
 Janine Arseneau
 Heather and Mark Baden
 Matthew Badger
 Pat Baer
 Elana Bannerman
 Helen Bechthold
 Ann and David Becker
 Lai King Moy and Michael Becker
 Muriel Becker
 Barbara and Edward Beckert



David Huntington
 Ruth and Amy Irvings
 Valerie Jackson
 Keith Jaffee
 Jewish Community Foundation
 Armour/Hersch Donor
 Advised Fund
 Jack & Barbara Recht
 Donor Advised Fund
 Sanford & Judith Mallin
 Donor Advised Fund
 Sharon & Richard Canter
 Donor Advised Fund
 Ruth and Fred Joachim
 Shirley and Willis Johnson
 Willie Johnson, Jr.
 George Justice
 Jane and Will Kaiser
 Kelli and Craig Karmazin
 Sandra and Robert Kattman
 Margaret Kerr
 James Ketchman
 Bruce Keyes
 Gregory King
 Judith and Alan Knight
 Todd Korb
 Vanessa Koster
 Jill Kraak
 Douglas Kruschke
 Margaret and Matthew Kurlinski
 Michael Kusic
 Mike Kwiatkowski
 Sarah and Tom Kyle
 John LaFave
 Judy and Norman Lasca, Jr.
 Raquel Lauritzen
 Emily and Kent Leick
 Phyllis Lensky
 Cheryl and Jonathan Lessin
 Toni and Jonah Levenberg
 Jody and Paul Loewenstein
 Laura and Andy Lysaght
 Katherine and Sanford Mallin
 Jennifer Manna
 Ann and Marvin Margolis
 Leticia and Victor Martinez
 Jeanne and Glenway Maxon
 Gene Mayer
 McDermott Will & Emery LLP
 Dee McGarity
 Debbie and John Meltzer
 Sunny Mendeloff
 Fran and Ron Meyers
 Nancy and Robert Miller
 MMK Design
 Susan and Lee Morgan
 Colleen Beaman and David Moss
 Paul Muirhead
 Judy and Charles Mulcahy
 Nancy and Steve Mullins
 Betty Jo and Jim Nelson
 Lisa and Eric Nelson
 Theresa Nemetz
 Rolfe and Mary Nervig
 Maureen and Craig Nuechterlein
 June Neumann
 Carolyn Newald
 Faith Stockhausen and
 Timothy Nichols
 Patrick Nolan
 Steven O'Connell
 Casey O'Gorman
 Anne Olson
 Eric Olson
 Ann Parkins
 Parag and Gauri Patel
 Jerry and Christine Patzwald
 Santa Perez
 Beth Peterman
 Sarah Piccione
 Richard Pieper
 Barbara and Douglas Pierce
 Amy Post
 PPC Foundation



Leslie Quevedo
 Patrick Quick
 Barbara Recht
 Kathryn Rock
 Richard Rodgers
 Karen Rogers
 Suzanne and Adolf Rosenblatt
 Jennifer and Paul Rosenblum
 Piper and Jonathan Rothschild
 George Rouman
 Clayton Ryder
 Brenda Saavedra
 Micky and Ron Sadoff
 James Santelle
 Jeffrey Schaefer
 Jill and Andrew Schlesinger
 Susan Schoenick
 Mark Schwertfeger
 Pam and Roger Scommegna
 Kelly Scroggins
 Marie and Jim Seder
 Bonnie and Fred Shafrin
 Nancy and Ignatius Smetek
 Veronica Sosa
 Julie and Stuart Spahr
 Splash Studio, Inc.
 Anne and Frederick Stratton
 Temple Builders of America, LLC
 The Synergy Companies, Inc.
 Win Thrall
 Tikkun Ha-Ir of Milwaukeee
 Joshua Torres
 Anne and John Traxler
 Stephen Turow
 Vitek Law Office
 Nicholas Vogg
 Vollrath Associates, Inc
 Benjamin Wagner
 Phyllis Wakefield
 Dustine Walker
 Vanessa Walton
 Elissa and Charles Weber
 Susan and Richard Weil
 Susan Winecki
 Margo Winter
 Winter, Kloman, Moter
 & Repp, S.C.
 Peggy and William Wise
 Leslie and Paul Woodruff
 Jasmine Zhao
 Andi and Mike Zimmerman
 Jill and Jon Zimmerman
 Ketiwe Zipperer

Gifts to COA were made...

In Honor of:

*Dick and Jean Ballou
 Victoria Bouras
 Ronald Cohn
 Dan Einhorn
 Phyllis Fink
 David and Nancy Glassner
 Nancy and Robert
 Greenbaum
 Shira Grinker
 Barbara Heilbronner
 Bonnie and Leon Joseph
 Rebecca Klabacca
 Sol and Genia Lemel
 Barbara Levi
 Edward Levi
 Cheryl Lubotsky
 Greg and Linda Marcus
 Bruce and Melinda Marsh
 Elaine and Howard Myers
 Carolyn Newald
 Paula Ondus
 Allen Rieselbach
 Harold Rosen
 Lucy Rosenberg
 Bryan Sadoff
 Dale Metz Schneider and
 Thomas Schneider
 Michael Schudson
 Morton Soifer
 David Wasserman*

In Memory of:

*Barbara Blutstein
 Steven Eichenbaum
 Barbara Fernholz
 Ethel Gill
 Ruth Giller
 Marissa Greenebaum
 John Gruesser
 Frank Heilbronner
 Harold Hiken
 Milt Holzman
 Robert Hyman
 David Laur
 Nathan Orlofsky
 Gladys Perlow
 James Phillips
 Paul Refkin
 Sylvia Rudenberg
 John Sohm
 Robert Sohm
 Paul Spheeris
 Gerald Stein
 Marlene Watchmaker
 Herb Weitman
 Hope Melamed Winter*

This listing contains gifts given to COA between April 1, 2015 and March 31, 2016.
 Gifts under \$100 are recognized on COA's website at www.coa-yfc.org.

Photos:
 David Szymanski
 Design:
 Peter Murphy



Greater Milwaukee & Waukesha County



MILWAUKEE PUBLIC SCHOOLS



909 E North Avenue
Milwaukee, WI 53212
414.263.8383
coa-yfc.org